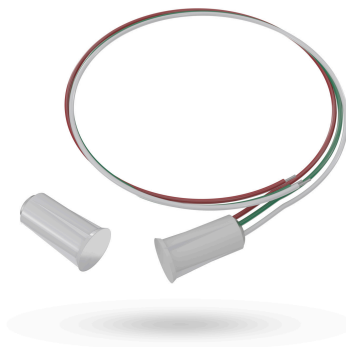


Magnetic Contact Accessory | Model: A-DCC



Description

This recessed magnetic contact disappears into the frame yet delivers rock-solid performance. A rare-earth magnet ensures positive switching, even on tight gaps, while the barbed, self-locking housing bites into wood for a fast, tool-free set. Pre-terminated 12" #22 AWG leads make wiring clean and quick. Choose White, Brown, Black, or Gray to blend with any finish.

Specifications

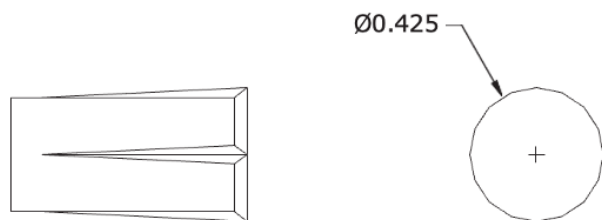
- Maximum Switching Voltage: 30VAC/VDC
- Maximum Switching Current: 200mA
- Switch/Contact configuration: SPDT

Certifications

RoHS **CE** **UL**

Drawings

MAGNET



SWITCH

