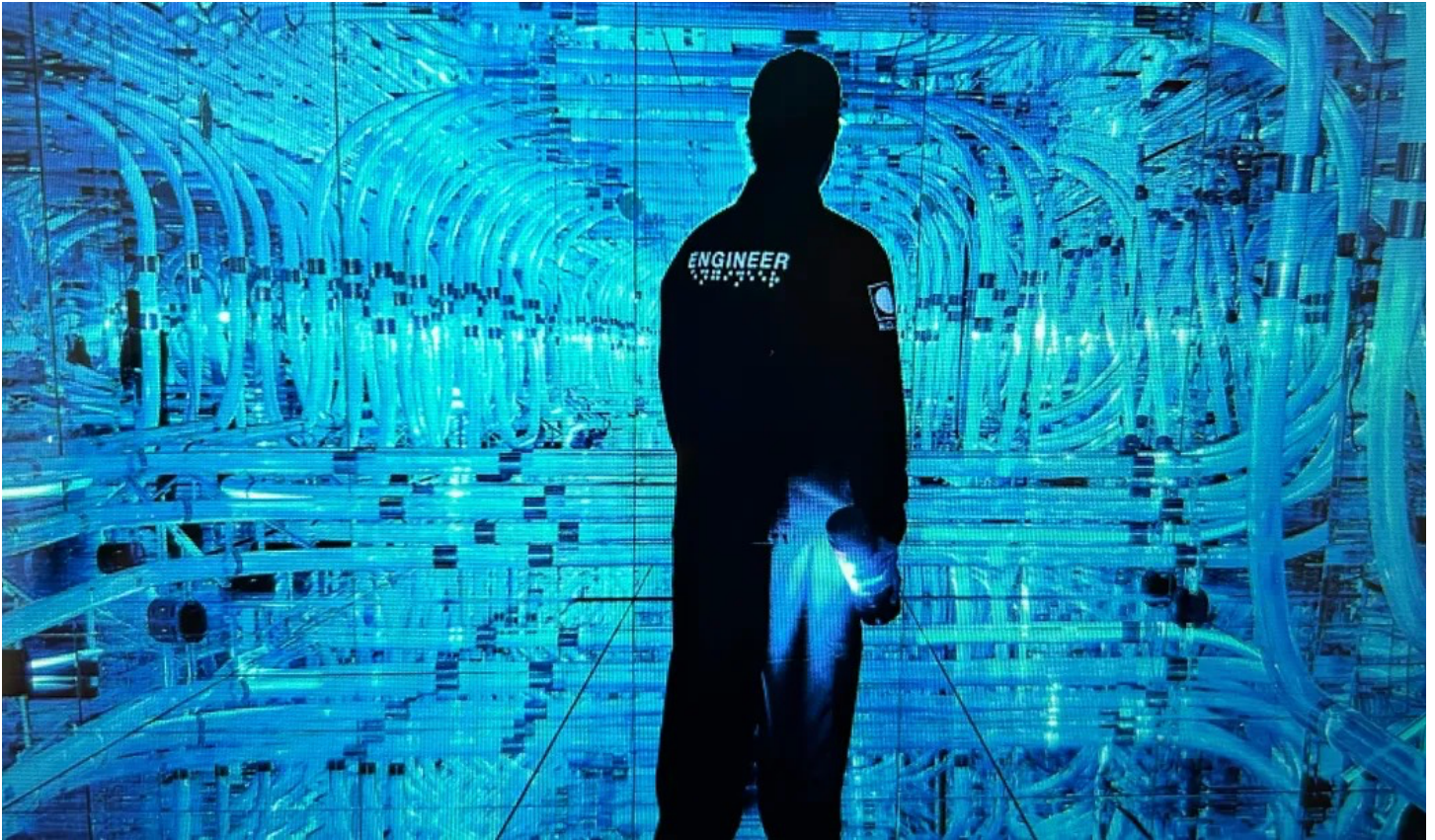


Mercer Labs Museum of Art and Technology (MOAT) - New York, NY



The Challenge

This re-purposing of a historical bank in New York City's Financial District into an innovative 36,000 sqft. museum designed to engage the senses was not short of challenging. The building's original architecture, with its thick stone walls, vaulted ceilings, and intricate historical details, posed significant obstacles to modern technology integration. Achieving seamless connectivity across multiple immersive installations, demanded a robust and flexible infrastructure. Moreover, the museum's commitment to accessibility and sustainability further heightened the complexity, requiring systems that were not only technically advanced but also energy-efficient and inclusive.

The Solution

The BubblyNet installation included many zones wirelessly connected with Bluetooth® Mesh as well as a series of X-SF0 Superfriends strategically positioned to overcome the network discontinuities. This decentralized network design ensured uninterrupted communication across the sprawling exhibition space, even through dense materials and architectural barriers. Touchscreens protected by PIN codes were used for intuitive control of the space by the museum staff.

Lighting Designer: Dark Light Design