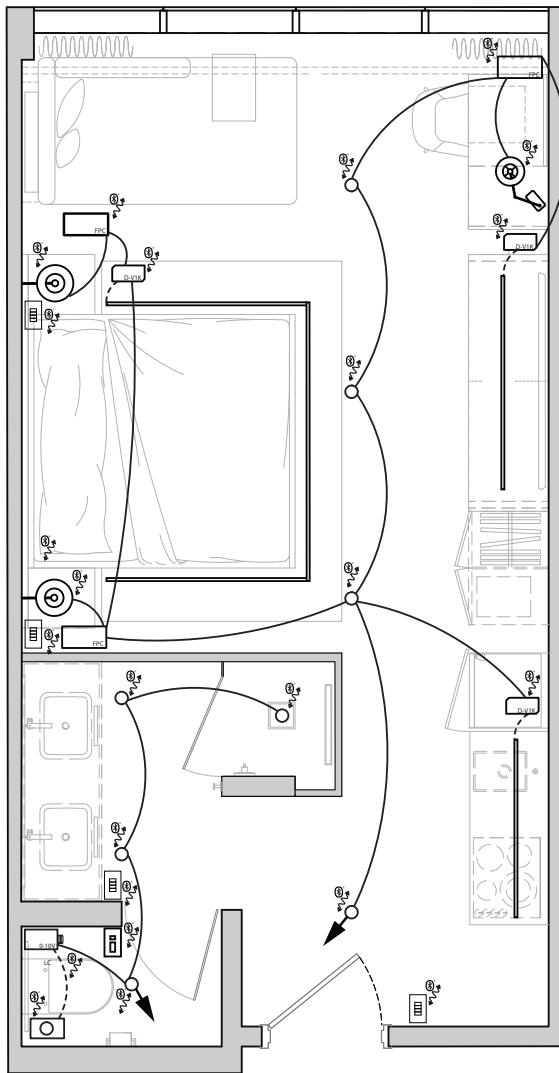


## DESIGN GUIDE

### GUEST ROOM WITH BLUETOOTH MESH LUMINAIRES



#### SEQUENCE OF OPERATION:

##### LIGHT FIXTURES:

- All fixtures are dimmable;
- Luminaires can be static white, warm dim, tunable white, RGBW;
- All fixtures are independently controlled or can be grouped together;
- Max. and Min. Trim can be set via App;

##### OCCUPANCY CONTROL:

- Fixtures automatically go to set brightness when space is occupied;
- Fixtures automatically turn off or low level when space is vacant;
- Occupancy or Vacancy mode;
- Brightness level for Occupied and Vacant state, delays and transitions can be set via App;

##### DAYLIGHT CONTROL:

- Smooth and continuous dimming;
- Separate daylight zones (can be as many as number of fixtures)
- Delays, transitions and light harvesting sensitivity can be set via App;

##### MANUAL CONTROL:

- ON/OFF, dim up and down, select scene (up to 16 scenes per fixtures)

##### TIME SCHEDULE:

- Time, recurring day of the week schedules, yearly special day schedules can be set via App;

##### ADDITIONAL OPTIONS:

- Shade control;
- GPS Time-keeper for clock accuracy;
- Gateway for clock accuracy, remote assistance, energy and space utilization analytics, BMS integration, voice activated commands
- Emergency Lighting Control

#### LEGEND

	LINE VOLTAGE
	LOW VOLTAGE
	TO MAIN POWER
	LINEAR LED
	OCCUPANCY SENSOR + SWITCH
	KEYPAD SWITCH
	BLUETOOTH MESH
	FORWARD PHASE CONTROLLER
	25W 24VDC DRIVER
	LOAD CONTROLLER
	EXTRACTION FAN

#### BILL OF MATERIAL

QTY	PRODUCT#	DESCRIPTION
4	K-Q4-UDL-00WH	KEYPAD - Q SERIES - 4 BUTTONS WHITE
1	K-C3-UDS-00WH	OCCUPANY SENSOR WITH SWITCH
3	C-F00-11-DL00	FORWARD PHASE CONTROLLER
3	D-V1K-00-24-17-D000	25W 24VDC DRIVER
1	C-L20-00-00	LOAD CONTROLLER
	BY OTHERS:	
8	DOWNLIGHT	BLUETOOTH MESH LUMINAIRE
3	LINEAR LED	24VDC