

**SEQUENCE OF OPERATION:**

**LIGHT FIXTURES:**

- All fixtures are dimmable;
- Max. and Min. Trim can be set via App;

**OCCUPANCY CONTROL:**

- Fixtures automatically go to set brightness when space is occupied;
- Fixtures automatically turn off or low level when space is vacant;
- Occupancy or Vacancy mode;
- Brightness level for Occupied and Vacant state, delays and transitions can be set via App;

**MANUAL CONTROL:**

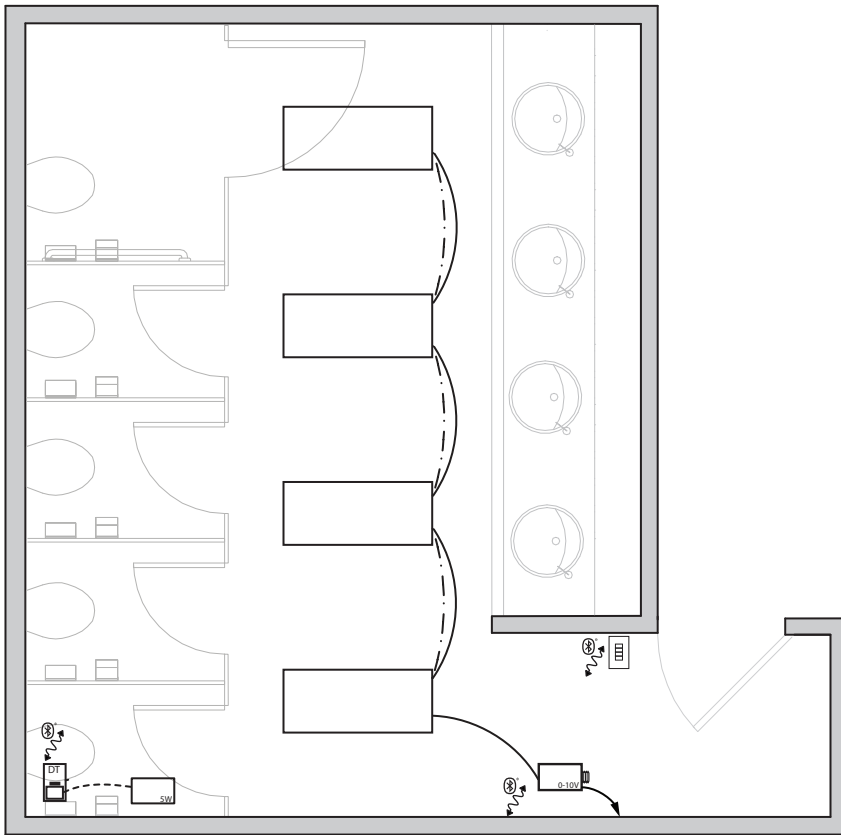
- ON/OFF, dim up and down, select scene

**TIME SCHEDULE:**

- Time, recurring day of the week schedules, yearly special day schedules can be set via App;

**ADDITIONAL OPTIONS:**

- Shade control;
- GPS Time-keeper for clock accuracy;
- Gateway for clock accuracy, remote assistance, energy and space utilization analytics, BMS integration, voice activated commands
- Emergency Lighting Control



**LEGEND**

	LINE VOLTAGE
	0-10V
	LOW VOLTAGE
	TO MAIN POWER
	LUMINAIRE
	DUAL TECH WALL SENSOR
	KEYPAD SWITCH
	BLUETOOTH MESH
	CONTROLLER
	SW TRANSFORMER

**BILL OF MATERIAL**

QTY	PRODUCT#	DESCRIPTION
1	G-T20-17-DJ00	0-10V-CONTROLLER
1	S-OC-024-D00W	DUAL TECH WALL SENSOR
1	K-Q4-UDL-00WH	KEYPAD - Q SERIES - 4 BUTTONS WHITE
1	A-T05-12-17-DJ00	SW TRANSFORMER
	BY OTHERS:	
4	LUMINAIRE	0-10V DIMMING